



Global *life* Sciences  
INC

- 1) Retail Commissions.**
- 2) Fast Start Bonus up to \$100.**
- 3) Generational Coded Bonus \$100.**
- 4) Dual Team Commissions (\$100K limit).**
- 5) Dual Team Matching Bonus (7 levels starting at 20%).**

# RANKS

**Preferred Customer (PC)** – Purchase Product and sign up for optional Autoship to receive a price discount on initial and subsequent orders.

**Company Representative (REP)** – Virtual Store Owner, with your own replicate website to refer retail and preferred customers.

**1-STAR (1)** - Must have personally sponsored 2 Reps (min. of 50BV each), one in each dual team leg or 200BV in active personally generated retail/PC volume. (See chart for remaining requirements).

**2-STAR (2)** – Must have a personally sponsored 1 STAR leader in 2 separate enroller tree legs or 600BV in active personally generated retail/PC volume. (See chart for remaining requirements).

**3-STAR (3)** – Must have a personally sponsored 2-STAR leader in 2 separate enroller tree legs or 1400BV in active personally generated retail/PC volume. (See chart for remaining requirements).

*\*You may also qualify for 3-STAR by purchasing a 50BV Basic Pack or Retail/PC volume of 100BV - FUTURE*

**4-STAR (4)** - Must have a personally sponsored 3-STAR leader in 2 separate enroller tree legs or 18,000BV in active personally generated retail/PC volume. (See chart for remaining requirements).

*\*You may also qualify for 4 STAR, for 30 days, by purchasing a 100BV Business Pack – FUTURE.*

**5-STAR (5)** - Must have a personally sponsored 4-STAR leader in 2 separate enroller tree legs or 50,000BV in active personally generated retail/PC volume. (See chart for remaining requirements).

*\*You may also qualify for 5 STAR, for 30 days, by purchasing a 400 BV Founder's Pack. This also qualifies you for the Generational Coded Bonus.*

**DIAMOND (D)**: Must have 3, 5-STAR leaders, in your personal genealogy, in 2 separate enroller tree legs or 150,000BV in active personally generated retail/PC volume. (See chart for remaining requirements).

**DOUBLE DIAMOND (DD)**: Must have 2, 5-STAR leaders and 1 DIAMOND leader, in your personal genealogy, in 2 separate enroller tree legs or 250,000BV in active personally generated retail/PC volume. (See chart for remaining requirements).

**TRIPLE DIAMOND (TD)**: Must have 1, 5-STAR leader and 2 DIAMOND leaders, in your personal genealogy, in 2 separate enroller tree legs or 350,000BV in active personally generated retail/PC volume. (See chart for remaining requirements).

**BLACK DIAMOND (BD)**: Must have 3, DIAMOND leaders in your personal genealogy, in 2 separate enroller tree legs or 450,000BV in active personally generated retail/PC volume. (See chart for remaining requirements).

**DOUBLE BLACK DIAMOND (DBD)**: Must have 4, DIAMOND leaders in your personal genealogy, in 3 separate enroller tree legs or 800,000BV in active personally generated retail/PC volume. (See chart for remaining requirements).

**TRIPLE BLACK DIAMOND (TBD):** Must have 4, DIAMOND leaders in your personal genealogy, in 3 separate enroller tree legs or 1,000,000BV in active personally generated retail/PC volume. (See chart for remaining requirements).

**CROWN DIAMOND (CD):** Must have 4, DIAMOND leaders in your personal genealogy, in 4 separate enroller tree legs or 1,500,000BV in active personally generated retail/PC volume. (See chart for remaining requirements).

**CROWN AMBASSADOR (CA):** Must have 4, DIAMOND leaders in your personal genealogy, in 4 separate enroller tree legs or 2,000,000BV in active personally generated retail/PC volume. (See chart for remaining requirements).

**ONE TIME BUSINESS SETUP PACKAGE: \$49.95USD**, one-time activation fee. No annual fee.

**Product Packs**

Initial Packages	Cost (USD)	Leadership Rank Benefit
<b>Founders Pack</b>	\$499.95	Qualified as a <b>5-STAR</b> for the remainder of the month you join, PLUS the entire following month and meets first Generational Coded-Bonus

**1. Retail Commissions - Paid Weekly**

All orders from your web site count as personal BV towards your monthly requirement for commissions. To earn retail commissions, you must maintain a minimum of 50BV personal volume each month (Monthly Loyalty Purchase optional). Commission paid is difference between Retail/PC and Wholesale price (except for free loyalty purchases).

**2. Fast Start (First Order) Bonus - Paid Weekly**

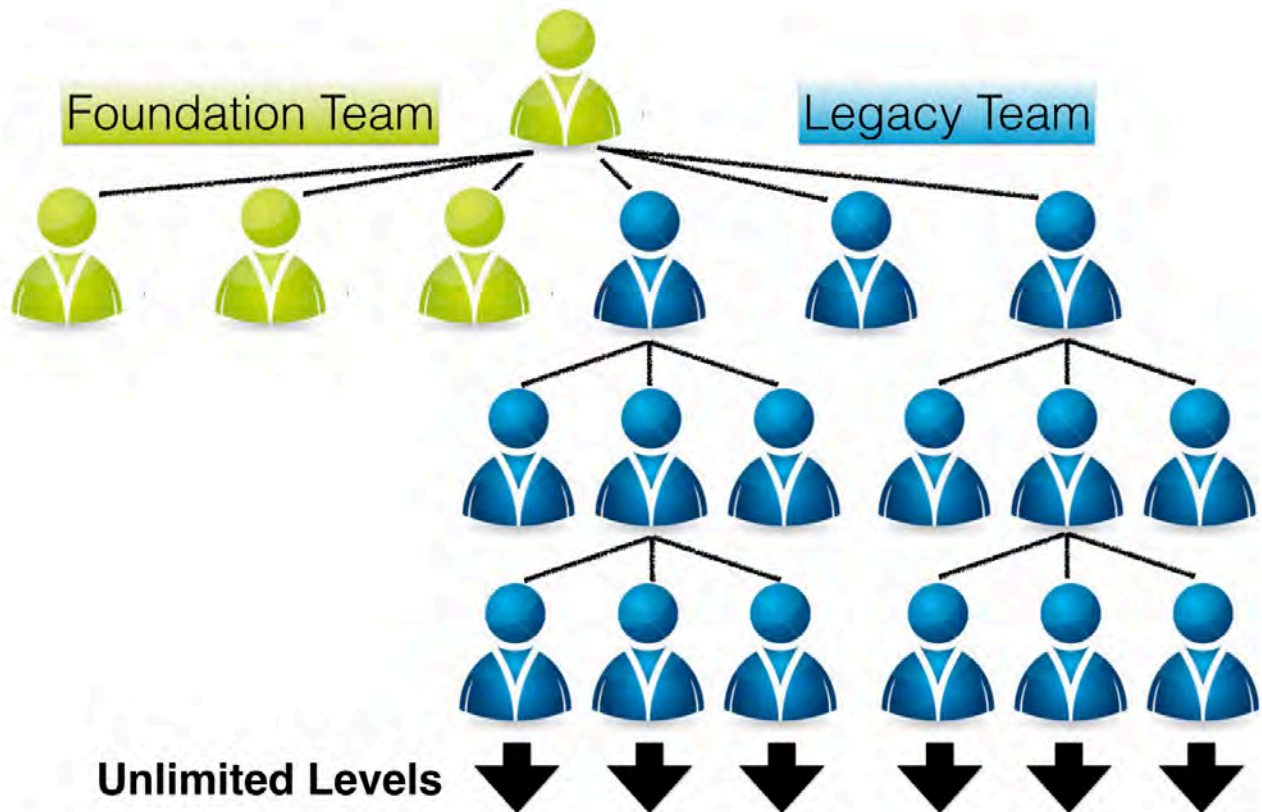
Initial Packages	Cost (USD)	BV	Fast Start Bonus	Gen Bonus	Dual Team BV Allocation
<b>Founders Pack</b>	\$499.97	400BV	\$100	\$100*	150BV

*\*Must purchase a Founders Pack to qualify for Gen Bonus on enrolled Founders Pack.*

### 3. Generational Qualification Bonus - \$100.00 (USD) Paid Weekly

This \$100.00 (USD) bonus is paid on the successful qualification of a new **4-STAR qualified** status who *either* purchases (or during the same enrollment month upgrades to) a \$499.95 (USD) Founders Pack, or who has have successfully sold through retail sales the equivalent 400BV amount in their first calendar month) and have an active 100BV Monthly Loyalty Purchase to maintain qualifications for this bonus.

Your first THREE sponsored and qualified 4-STAR leaders pays a \$100 Generational Qualification Bonus to your first generation upline enroller who is also a Generational Qualified 4-STAR. After you have successfully achieved qualifying your first three 4-STAR leaders, beginning with your FOURTH personally qualified 4-STAR leader and onwards thereafter, the \$100 Generational Qualification Bonus will be paid to you and on every qualified 4-STAR leader that you personally sponsor, and any additional 4-STAR Leader that are sponsored and qualified by your entire legacy organization down to unlimited levels, unblocked.



Each REPRESENTATIVE works to complete their Foundation Team. Each REPRESENTATIVE they enroll and or qualify in their Foundation Team are linked to you in **your** Legacy Team. This means that each REPRESENTATIVE in your Legacy Team must enroll and qualify 3 REPRESENTATIVE's that will remain in your Legacy Team **before** they start their own Legacy Team subsequently thereafter.

#### 4. Dual Team Cycle Commissions - \$20.00 (USD) Per Cycle Paid Weekly

The Fast Start (First Order) Bonuses and Legacy Qualification Bonuses are paid out first before any BV is calculated in the Dual Team Cycle Commissions structure. The chart below shows the amount of BV from each of the Product Packages that is calculated in the Dual Team Commission Structure.

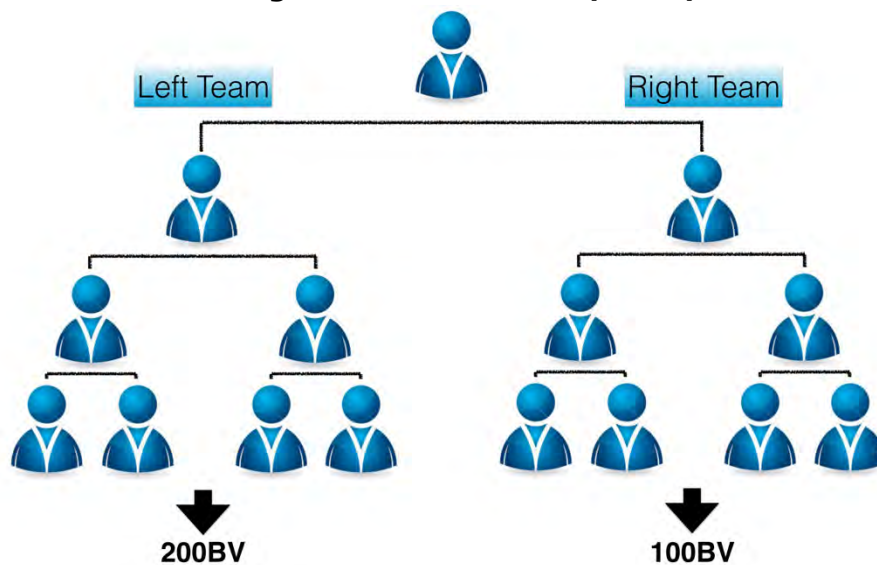
Packages	Dual Team BV Allocation (First Order Only)	Dual Team BV Allocation (Upgrade Orders)
Founders Pack	150BV	400BV

Any additional Product Packages or orders purchased after the First Order and monthly Loyalty Purchases are calculated in the Dual Team Commissions Structure using 100% of the BV value.

You cycle every time the computer sees 200BV on your stronger team and 100BV on your lesser team, with a weekly earnings potential of up to \$100,000 (USD). All Dual Team Commissions are subject to the REPRESENTATIVE reaching the required qualifications.

To qualify for Dual Team Cycle Commissions, you are required to personally produce a Loyalty Purchase of 50BV or greater and sponsor a minimum of two (2) REPRESENTATIVE's – one placed on the left team and one placed on the right team – who each produce a Loyalty Purchase of 50BV or greater. If you do not satisfy the Dual Team Commissions qualification, but maintain a minimum 50BV in a Monthly Loyalty Purchase, the computer will automatically accumulate and store unpaid sales volumes in your team(s) for future commissions calculations (upon qualification).

**1 cycle = \$20.00 (USD)**



**Cycle Up To \$ 100,000 (USD) per week!**

## 5. SEVEN Levels Dual Team Matching Bonuses - Paid Weekly

This bonus is earned on the Dual Team Cycle Commissions earnings of all REPRESENTATIVEs in your personal enrollment tree. Dual Team Matching Bonuses generation levels are based upon your sponsorship tree.

Generation	1-STAR	2-STAR	3-STAR	4-STAR	5-STAR	Diamond	Black Diamond	Crown Ambassador
1	10%	15%	15%	20%	20%	20%	20%	20%
2			10%	10%	15%	15%	15%	15%
3				5%	10%	10%	10%	10%
4				3%	5%	5%	5%	5%
5					3%	3%	3%	3%
6							3%	3%
7								2%

### Monthly Loyalty Purchase/BV Production Requirements

To earn certain bonuses in the GLS compensation plan, a GLS Representative is required to personally produce a minimum amount of monthly business volume (BV), either through the optional Loyalty Purchase monthly auto-delivery option, and/or sell product(s) through their REPRESENTATIVE website to a retail/preferred customer(s). An equivalent (or greater) amount of GLS product BV under the REPRESENTATIVE's personal account is required to be achieved and maintained on a calendar month basis, to receive the corresponding commissionable entitlements:

1. 50BV per calendar month Loyalty Purchase order is required to earn monthly Retail/PC Commissions.
2. 50BV per calendar month Loyalty Purchase order is required to earn the Fast Start (First Order) Bonus on all personally enrolled Basic, Starter and Business Builder Packages. 100BV Loyalty Purchase order is required to earn Fast Start (First Order) Bonus on all personally enrolled Founders Packages.
3. 100BV per calendar month Loyalty Purchase order(s) and an initial/upgrade purchase of a FOUNDERS PACK to earn the Generational Qualification Bonus.
4. 100BV per calendar month Loyalty Purchase order(s) is required to earn Dual Team Cycle Commissions for 1-STAR REPRESENTATIVEs and above.
5. 100BV per calendar month Loyalty Purchase order(s) is required to earn Dual Team Matching Bonus.

## **Bonus Schedule**

Weekly bonuses are locked on every Monday, based on the sales of the previous week and paid on the following Monday. Monthly bonuses are paid on the 10th of the following month, based on the sales of the previous month.

## **Flushing**

This is a non-flushing dual team plan. Any unused BV that was not eligible for qualification or used to calculate Dual Team Commissions will continue to accumulate in your left and right teams, and will be used in future sales cycles when the accumulation BV amounts (ex. 100bv/200bv) and Dual Team qualifications are achieved. Unused BV that is retained in your left and right teams that has not been utilized after 6 months of inactivity may be subject to a flushing revision, at GLS Inc.'s discretion.

## **Rank Advancement**

Any rank you achieve in a given week will be activated and paid according to that rank the following week. Any unqualified rank, beginning from the rank of Diamond or above, who may have lost their active weekly or monthly Diamond or above qualification, will be granted a grace period of 30 days in order to re-qualify and retain their Diamond level or above rank benefits.



## Rank Achievement Requirements

Leadership Rank Representative/REPRESENTATIVE	Monthly Loyalty Purchase BV Required	Min # of Personally Enrolled Rank REPRESENTATIVE's (or Retail/PC BV)	Minimum Monthly Total BV Lesser Leg	Minimum Monthly Enroller Tree BV in EACH TEAM Leg
1-STAR	<b>50BV</b>	2 REPs at 50BV (200BV)	n/a	50
2-STAR	<b>100BV</b>	2 x 1-STAR (600BV)	500	50
3-STAR	<b>100BV</b>	2 x 2-STAR (1,400BV)	1,000	100
4-STAR	<b>100BV</b>	2 x 3-STAR (18,000BV)	2,000	200
5-STAR	<b>100BV</b>	3 x 4-STAR (50,000BV)	5,000	500
DIAMOND (D)	<b>100BV</b>	3 x 5-STAR (150,000BV)	15,000	1,500
DOUBLE DIAMOND (DD)	<b>100BV</b>	2 x 5-STAR & 1 x D (250,000BV)	30,000	3,000
TRIPLE DIAMOND (TD)	<b>100BV</b>	1 x 5-STAR & 2 x D (350,000BV)	100,000	10,000
BLACK DIAMOND (BD)	<b>120BV</b>	3 x D (450,000BV)	250,000	25,000
DOUBLE BLACK DIAMOND (DBD)	<b>120BV</b>	4 x D (800,000BV)	500,000	50,000
TRIPLE BLACK DIAMOND (TBD)	<b>120BV</b>	4 x D (1,000,000BV)	750,000	75,000
CROWN DIAMOND (CD)	<b>120BV</b>	4 x D (1,500,000BV)	1,000,000	100,000
CROWN AMBASSADOR (CA)	<b>120BV</b>	4 x D (2,000,000BV)	1,500,000	150,000

**Dual Team Commissions, Maximum Cycle Earnings and Maximum Match Earnings.**

<b>Rank</b>	<b>Dual Team Income Cycle Value</b>	<b>Maximum # of Dual Team Cycles per week</b>	<b>Maximum Dual Team Cycle Commissions per week (USD)</b>	<b>Maximum Dual Team Match Bonus Commissions per week</b>
1-STAR	\$20	5	\$100	\$50
2-STAR	\$20	10	\$200	\$100
3-STAR	\$20	20	\$400	\$250
4-STAR	\$20	20	\$400	\$500
5-STAR	\$20	50	\$1,000	\$1,000
DIAMOND (D)	\$20	100	\$2,000	Unlimited
DOUBLE DIAMOND (DD)	\$20	200	\$4,000	Unlimited
TRIPLE DIAMOND (TD)	\$20	400	\$8,000	Unlimited
BLACK DIAMOND (BD)	\$20	800	\$16,000	Unlimited
DOUBLE BLACK DIAMOND (DBD)	\$20	1,600	\$32,000	Unlimited
TRIPLE BLACK DIAMOND (TBD)	\$20	2,400	\$48,000	Unlimited
CROWN DIAMOND (CD)	\$20	3,500	\$70,000	Unlimited
CROWN AMBASSADOR (CA)	\$20	5,000	\$100,000	Unlimited

## DEFINITIONS

**Active Leg** – A leg that has at least one BCQ (Active – see definition later in this document) representative somewhere in the downline.

**Base Rank** – The starting / lowest rank associated with the promotions process. Every Representative will start at this rank for each rank promotion process that is run.

**BCQ (Active)** – Base Commission Qualified. This flag represents the basic activity level that must be maintained by a Representative in order to be considered “active” under the rules of the compensation plan.

**BV** – Business Volume. Synonym for CV (See definition below)

**Current Period** – Current month

**Customer** – A person who makes purchases at retail price.

**Customer orders, Retail Orders, Preferred Customer orders** - These are all customer orders that a Representative has processed through their replicated website, or autoships.

**CV** – Commissionable Volume. The value that the product will contribute toward commission and bonus calculations.

**Company Representative** – A human being that is actively participating in the GLS' compensation plan and trying to earn commissions. This person IS in the structure. Synonyms include: Consultant, Member, Small Business Associate, Representative, etc....

**Representative Orders** - These are orders placed by representatives that are downline from the representative of interest.

**Enroller** – Synonym for Sponsor. See definition for Sponsor below.

**Front Line** – The Representatives placed immediately below a specified representative. This relationship is maintained in the PLACEMENT Tree.

**Lineage** – Lineage refers to which side of the placement position (Left or Right) that a representative's position appears on.

**Loyalty Purchase** – The sum of personal purchases made by a member through autoship or regular order, and retail customer orders. This value is used as a qualifier for all commissions and will VARY based on the commission

**PC** – Preferred Customer. A customer that has agreed to receive an automatic shipment each

month of company products. Preferred customers will receive a discount on the retail price of product.

**Personal Orders** – Orders placed by the Representative for themselves.

**Personally Sponsored** – The count of other Representatives the Representative has personally sponsored/enrolled. This relationship is maintained in the SPONSORSHIP/ENROLLEMENT Tree.

**Placement** – The physical position in the tree. Placement will always be the position directly above the representative's position in the tree. This is a physical tree and is not affected by sponsorship.

**PSV** – Personal Sales Volume. This is the volume from orders that will count towards qualification purposes. Specifically, the rank promotions and BCQ processes. PSV is generated from a product sale from any order, and is awarded to the Representative associated with the order.

**Rank Leg** – Termed used in back office to reference a leg in your sponsorship tree that has at least one qualifying ranked representative. Used to determine your qualifying rank.

**SBA** – Small Business Associate, Synonymous with Representative (see Representative definition)

**Sponsor** – The representative who signs up (enrolls) another customer or representative into the system.

**Sponsorship Tree** – The Multilevel structure that is maintained to represent Sponsorship/Enroller relationships. This in an infinitely wide and deep structure. This tree is sometimes referred to as the sponsorship lineage tree.

**Team** – A team consists of all the downline representatives from a representative's position, down.

**Team Volume** – The PSV of all team members PLUS the representative's own PSV for the period being processed.

#### **Disclaimer**

GLS is a direct-to-consumer organization that designs, manufactures and markets exclusive products. We don't believe in get rich quick programs. We believe in hard work, dedication, adding value and serving others. As stipulated by law, we cannot and do not make any guarantees about your ability to get results or earn any money with our ideas, information, tools, compensation systems or strategies. We don't know you and, besides, your results in business are up to you and solely determined by your efforts, resources, connections, dedication and application. Nothing in this document or any of our websites is a promise or guarantee of results or future earnings, and we do not offer any legal, medical, tax or other professional advice. Any financial numbers referenced here, or on any of our websites, are simply of an educational nature describing how our programs work and should not be considered exact, actual or as a promise of potential earnings. All numbers are illustrative only. For any concerns beyond the scope of this document, we recommend you seek professional advice.